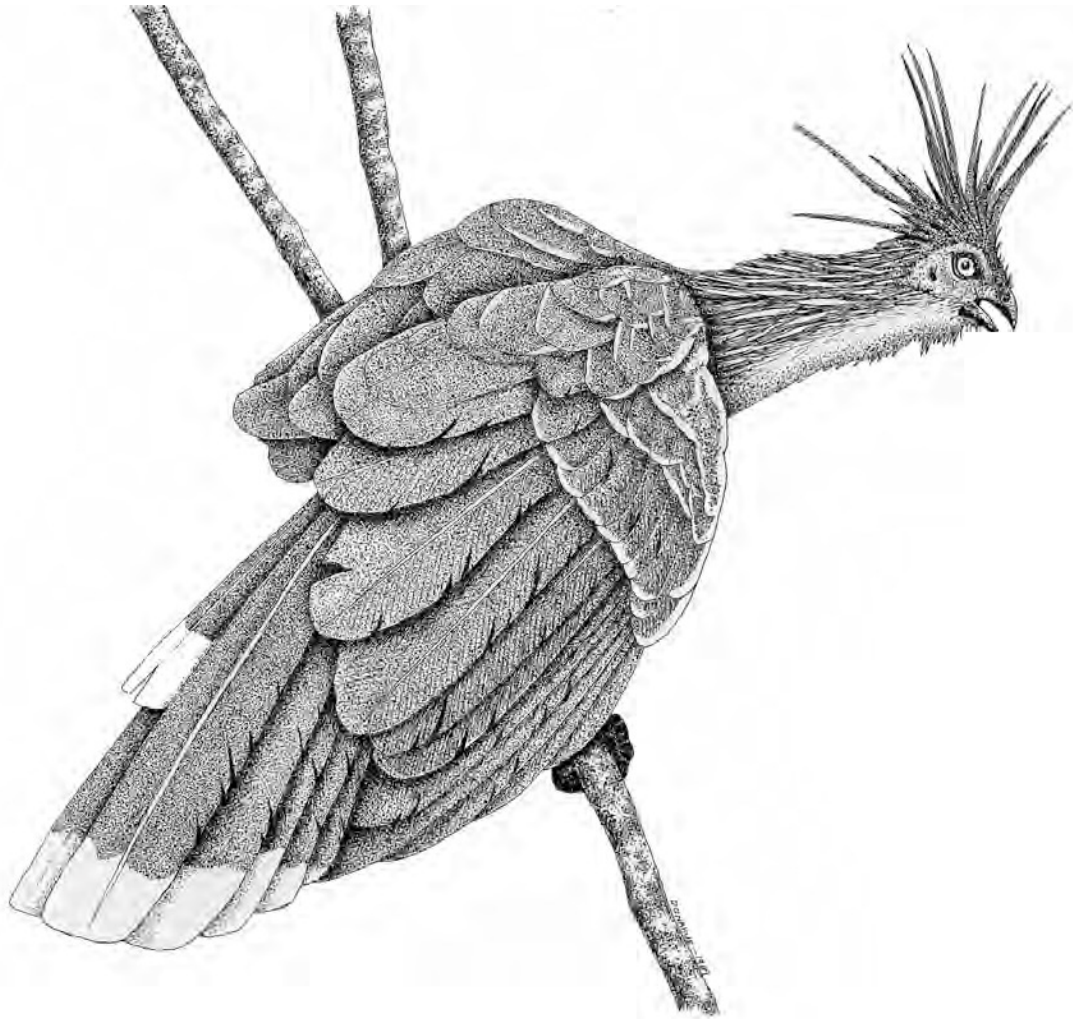


HATO PIÑERO NEW YEAR TOUR TRIP LISTS

Dec. 1986 → Jan. 2007



HOATZIN *Opisthocomus hoazin* by Paul Donahue

Prepared by
Jeri M. Langham

*VICTOR EMANUEL NATURE TOURS, INC.
2525 WALLINGWOOD DR., STE 1003, AUSTIN, TX 78746*

This TRIP LIST is for potential participants in VENT's **HATO PIÑERO NEW YEAR** tour led by Jeri Langham and co-led by David Ascanio, Gary Langham or Shawn Hayes. It includes species seen on past visits by all VENT personnel, whether as part of a tour or just a scouting trip. It also represents visits to **all** parts of the ranch during **all** seasons of the year.

Column I is designed to let you know which species are very common on the ranch and/or are good ones to learn as an example of different families. For those of you with limited time and/or little Neotropical experience, studying those species highlighted with an asterisk will help you prepare for our trip.

Column II is designed to give you a **realistic** idea of which species we are likely to encounter during our tour. A "blank", "1", "2", through "20" indicate the number of Jeri's **TWENTY** previous Hato Piñero New Year tours that have seen each species. An "h" indicates that the species was only heard. If there are two numbers separated by a comma, the first number indicates the number of tours on which it was seen and the second number the tours on which it was only heard.

Column III shows the species that were seen or heard on the most recent tour.

Come join us for a great Neotropical experience!

Jeri Langham
January 15, 2007

HATO PIÑERO NEW YEAR Dec. 1986 - Jan. 2007

1

	I	II	III
1	TINAMOUS: TINAMIDAE		
2		1	
3		10,9	h
4		5,8	
5	GREBES: PODICIPEDIDAE		
6		3	
7		1,1	
8	CORMORANTS: PHALACROCORACIDAE		
9	*	20	x
10	ANHINGAS & DARTERS: ANHINGIDAE		
11	*	20	x
12	HERONS, EGRETS & BITTERNS: ARDEIDAE		
13	*	20	x
14		20	x
15		1	
16	*	20	x
17		20	x
18		20	x
19		20	x
20		20	x
21		20	x
22		6	
23	*	19	x
24		20	x
25		18	x
26		20	x
27	*	20	x
28		1	
29			
30			
31	STORKS: CICONIIDAE		
32	*	19	x
33		8	
34	*	20	x
35	IBISES & SPOONBILLS: THRESKIORNITHIDAE		
36	*	20	x
37	*	20	x
38		20	x
39	*	20	x
40		18	x
41		20	x
42		17	x
43		20	x
44	SCREAMERS: ANHIMIDAE		
45		20	x
46	DUCKS, GEESE & SWANS: ANATIDAE		
47		1	
48		18	x
49			
50			

HATO PIÑERO NEW YEAR Dec. 1986 - Jan. 2007

2

		I	II	III
1	BLACK-BELLIED WHISTLING-DUCK <i>Dendrocygna autumnalis</i>		18	x
2	ORINOCO GOOSE <i>Neochen jubata</i>			
3	MUSCOVY DUCK <i>Cairina moschata</i>		20	x
4	COMB DUCK <i>Sarkidiornis melanotos</i>			
5	BRAZILIAN TEAL <i>Amazonetta brasiliensis</i> [new name]			
6	BLUE-WINGED TEAL <i>Anas discors</i>		1	
7	MASKED DUCK <i>Nomonyx dominica</i>			
8	NEW WORLD VULTURES: CATHARTIDAE			
9	BLACK VULTURE <i>Coragyps atratus</i>	*	20	x
10	TURKEY VULTURE <i>Cathartes aura</i>		20	x
11	LESSER YELLOW-HEADED VULTURE <i>Cathartes burrovianus</i>		20	x
12	KING VULTURE <i>Sarcoramphus papa</i>		20	x
13	OSPREY: PANDIONIDAE [new Family]			
14	OSPREY <i>Pandion halietus</i>		19	x
15	KITES, EAGLES, HAWKS & ALLIES: ACCIPITRIDAE			
16	GRAY-HEADED KITE <i>Leptodon cayanensis</i>		12	x
17	HOOK-BILLED KITE <i>Chondrohierax uncinatus</i>		9	x
18	SWALLOW-TAILED KITE <i>Elanoides forficatus</i>			
19	PEARL KITE <i>Gampsonyx swainsonii</i>		6	
20	WHITE-TAILED KITE <i>Elanus leucurus</i> - resplit		14	x
21	SNAIL KITE <i>Rostrhamus sociabilis</i>		20	x
22	SLENDER-BILLED KITE <i>Rostrhamus hamatus</i>		2	
23	DOUBLE-TOOTHED KITE <i>Harpagus bidentatus</i>		2	x
24	PLUMBEOUS KITE <i>Ictinia plumbea</i>		2	
25	LONG-WINGED HARRIER <i>Circus buffoni</i>			
26	BICOLORED HAWK <i>Accipiter bicolor</i>		9	x
27	CRANE HAWK <i>Geranospiza caerulescens</i>		20	x
28	COMMON BLACK-HAWK <i>Buteogallus anthracinus</i>		1	
29	GREAT BLACK-HAWK <i>Buteogallus urubitinga</i>		20	x
30	SAVANNA HAWK <i>Buteogallus meridionalis</i>	*	20	x
31	HARRIS' HAWK <i>Parabuteo unicinctus</i>		6	
32	BLACK-COLLARED HAWK <i>Busarellus nigricollis</i>		20	x
33	GRAY HAWK <i>Asturina nitida</i>		20	x
34	ROADSIDE HAWK <i>Buteo magnirostris</i>	*	20	x
35	SHORT-TAILED HAWK <i>Buteo brachyurus</i>		8	x
36	BROAD-WINGED HAWK <i>Buteo platypterus</i>		1	x
37	WHITE-TAILED HAWK <i>Buteo albicaudatus</i>		20	x
38	ZONE-TAILED HAWK <i>Buteo albonotatus</i>		9	x
39	BLACK-AND-WHITE HAWK-EAGLE <i>Spizastur melanoleucus</i>		1	
40	ORNATE HAWK-EAGLE <i>Spizaetus ornatus</i>		2	
41	FALCONS & CARACARAS: FALCONIDAE			
42	CRESTED CARACARA <i>Caracara cheriway</i> [new Genus]	*	20	x
43	YELLOW-HEADED CARACARA <i>Milvago chimachima</i>	*	20	x
44	LAUGHING FALCON <i>Herpetotheres cachinnans</i>		20	x
45	COLLARED FOREST-FALCON <i>Micrastur semitorquatus</i>		3,3	h
46	AMERICAN KESTREL <i>Falco sparverius</i>		20	x
47	APLOMADO FALCON <i>Falco femoralis</i>		20	x
48	MERLIN <i>Falco columbarius</i>		6	x
49	BAT FALCON <i>Falco rufigularis</i>		17	x
50				

HATO PIÑERO NEW YEAR Dec. 1986 - Jan. 2007

3

	I	II	III
1 PEREGRINE FALCON <i>Falco peregrinus</i>		4	x
2 CHACHALACAS, GUANS & CURASSOWS: CRACIDAE			
3 RUFOUS-VENTED CHACHALACA <i>Ortalis ruficauda</i>	*	20	x
4 YELLOW-KNOBBED CURASSOW <i>Crax daubentoni</i>		20	x
5 NEW WORLD QUAIL: ODONTOPHORIDAE			
6 CRESTED BOBWHITE <i>Colinus cristatus</i>		20	x
7 HOATZINS: OPISTHOCOMIDAE			
8 HOATZIN <i>Opisthocomus hoazin</i>	*	20	x
9 LIMPKIN: ARAMIDAE			
10 LIMPKIN <i>Aramus guarauna</i>		20	x
11 RAILS, GALLINULES & COOTS: RALLIDAE			
12 GRAY-BREASTED CRAKE <i>Laterallus exilis</i>		1	x
13 ASH-THROATED CRAKE <i>Porzana albicollis</i>		h	h
14 GRAY-NECKED WOOD-RAIL <i>Aramides cajanea</i>	*	20	x
15 PURPLE GALLINULE <i>Porphyryla martinica</i>		20	x
16 AZURE GALLINULE <i>Porphyryla flavirostris</i>		3	
17 COMMON MOORHEN <i>Gallinula chloropus</i>		1	
18 SUNGREBES: HELIORNITHIDAE			
19 SUNGREBE <i>Heliornis fulica</i>		3	
20 SUNBITTERN: EURYPYGIDAE			
21 SUNBITTERN <i>Eurypyga helias</i>	*	20	x
22 JACANAS: JACANIDAE			
23 WATTLED JACANA <i>Jacana jacana</i>	*	20	x
24 STILTS & AVOCETS: RECURVIROSTRIDAE			
25 BLACK-NECKED STILT <i>Himantopus mexicanus</i>		9	x
26 THICK-KNEES: BURHINIDAE			
27 DOUBLE-STRIPED THICK-KNEE <i>Burhinus bistriatus</i>	*	20	x
28 LAPWINGS & PLOVERS: CHARADRIIDAE			
29 PIED LAPWING <i>Vanellus cayanus</i>		1	
30 SOUTHERN LAPWING <i>Vanellus chilensis</i>		20	x
31 COLLARED PLOVER <i>Charadrius collaris</i>		4	
32 SANDPIPERS & ALLIES: SCOLOPACIDAE			
33 SOUTH AMERICAN SNIPE <i>Gallinago paraguaiiae</i>		5	
34 GIANT SNIPE <i>Gallinago undulata</i>			
35 GREATER YELLOWLEGS <i>Tringa melanoleuca</i>		5	x
36 LESSER YELLOWLEGS <i>Tringa flavipes</i>		7	x
37 SOLITARY SANDPIPER <i>Tringa solitaria</i>		19	x
38 SPOTTED SANDPIPER <i>Actitis macularia</i>		14	x
39 SEMIPALMATED SANDPIPER <i>Calidris pusilla</i>			
40 WESTERN SANDPIPER <i>Calidris mauri</i>			
41 LEAST SANDPIPER <i>Calidris minutilla</i>		4	x
42 PECTORAL SANDPIPER <i>Calidris melanotus</i>		1	x
43 TERNS: STERNIDAE			
44 YELLOW-BILLED TERN <i>Sterna superciliaris</i>			
45 LARGE-BILLED TERN <i>Phaetusa simplex</i>		3	
46 SKIMMERS: RHYNCHOPIDAE			
47 BLACK SKIMMER <i>Rynchops niger</i>			
48 PIGEON & DOVES: COLUMBIDAE			
49 PALE-VENTED PIGEON <i>Columba cayennensis</i>	*	20	x
50			

HATO PIÑERO NEW YEAR Dec. 1986 - Jan. 2007

4

		I	II	III
1	EARED DOVE <i>Zenaida auriculata</i>		20	x
2	COMMON GROUND-DOVE <i>Columbina passerina</i>		20	x
3	PLAIN-BREASTED GROUND-DOVE <i>Columbina minuta</i>		16	x
4	RUDDY GROUND-DOVE <i>Columbina talpacoti</i>	*	20	x
5	SCALED DOVE <i>Scardafella squammata</i>	*	20	x
6	BLUE GROUND-DOVE <i>Claravis pretiosa</i>		19,1	x
7	WHITE-TIPPED DOVE <i>Leptotila verreauxi</i>		20	x
8	MACAWS, PARAKEETS & PARROTS: PSITTACIDAE			
9	SCARLET MACAW <i>Ara macao</i>	*	20	x
10	CHESTNUT-FRONTED MACAW <i>Ara severa</i>		12	x
11	BROWN-THROATED PARAKEET <i>Aratinga pertinax</i>	*	20	x
12	GREEN-RUMPED PARROTLET <i>Forpus passerinus</i>	*	20	x
13	ORANGE-CHINNED PARAKEET <i>Brotogeris jugularis</i>		20	x
14	YELLOW-CROWNED PARROT <i>Amazona ochrocephala</i>		19	x
15	CUCKOOS & ANIS: CUCULIDAE			
16	DWARF CUCKOO <i>Coccyzus pumilus</i>		7,2	x
17	YELLOW-BILLED CUCKOO <i>Coccyzus americanus</i>			
18	DARK-BILLED CUCKOO <i>Coccyzus melacoryphus</i>		1	
19	SQUIRREL CUCKOO <i>Piaya cayana</i>	*	20	x
20	GREATER ANI <i>Crotophaga major</i>		11,1	h
21	SMOOTH-BILLED ANI <i>Crotophaga ani</i>		20	x
22	GROOVE-BILLED ANI <i>Crotophaga sulcirostris</i>	*	20	x
23	STRIPED CUCKOO <i>Tapera naevia</i>		10,8	h
24	PHEASANT CUCKOO <i>Dromococcyx phasianellus</i>		h	
25	BARN OWLS: TYTONIDAE			
26	BARN OWL <i>Tyto alba</i>		14,2	x
27	TYPICAL OWLS: STRIGIDAE			
28	TROPICAL SCREECH-OWL <i>Megascops choliba</i> [new Genus]		9,7	x
29	GREAT HORNED OWL <i>Bubo virginianus</i>		20	x
30	MOTTLED OWL <i>Ciccaba virgata</i>		2,1	
31	BLACK-AND-WHITE OWL <i>Ciccaba nigrolineata</i>		6,2	
32	SPECTACLED OWL <i>Pulsatrix perspicillata</i>		15,2	x
33	FERRUGINOUS PYGMY-OWL <i>Glucidium brasilianum</i>		12,6	x
34	BURROWING OWL <i>Athene cunicularia</i>			
35	STRIPED OWL <i>Pseudoscops clamator</i> [new genus]		11,1	
36	STYGIAN OWL <i>Asio stygius</i>		h	
37	SHORT-EARED OWL <i>Asio flammeus</i>		1	
38	POTOOS: NYCTIBIIDAE			
39	GREAT POTOO <i>Nyctibius grandis</i>		20	x
40	COMMON POTOO <i>Nyctibius griseus</i>	*	20	x
41	NIGHTJARS & ALLIES: CAPRIMULGIDAE			
42	LESSER NIGHTHAWK <i>Chordeiles acutipennis</i>		18	x
43	NACUNDA NIGHTHAWK <i>Podager nacunda</i>		19	x
44	BAND-TAILED NIGHTHAWK <i>Nyctiprogne leucopyga</i>		8	x
45	PAURAUQUE <i>Nyctidromus albicollis</i>	*	20	x
46	RUFOUS NIGHTJAR <i>Caprimulgus rufus</i>			
47	LITTLE NIGHTJAR <i>Caprimulgus parvulus</i>		14	x
48	WHITE-TAILED NIGHTJAR <i>Caprimulgus cayennensis</i>		20	x
49				
50				

HATO PIÑERO NEW YEAR Dec. 1986 - Jan. 2007

5

	I	II	III
1 SPOT-TAILED NIGHTJAR <i>Caprimulgus maculicaudus</i>		1	
2 SWIFTS: APODIDAE			
3 FORK-TAILED PALM-SWIFT <i>Tachornis squamata</i> [n. genus]		3	
4 ASHY-TAILED SWIFT <i>Chaetura meridionalis</i>		1	
5 HUMMINGBIRDS: TROCHILIDAE			
6 PALE-BELLIED HERMIT <i>Phaethornis anthophilus</i>		6	
7 LITTLE HERMIT <i>Phaethornis longuemareus</i>		3	
8 WHITE-NECKED JACOBIN <i>Florisuga mellivora</i>			
9 BLACK-THROATED MANGO <i>Anthracothorax nigricollis</i>		5	x
10 RUBY-TOPAZ HUMMINGBIRD <i>Chrysolampis mosquitus</i>	*	20	x
11 BLUE-TAILED EMERALD <i>Chlorostilbon mellisugus</i>		20	x
12 WHITE-TAILED GOLDENTHROAT <i>Polytmus guainumbi</i>		11	
13 GLITTERING-THROATED EMERALD <i>Polyerata fimbriata</i>	*	20	x
14 STEELY-VENTED HUMMINGBIRD <i>Saucerottia saucerrottei</i>		10	
15 COPPER-RUMPED HUMMINGBIRD <i>Saucerottia tobaci</i>		12	x
16 WHITE-VENTED PLUMELETEER <i>Chalybura buffonii</i>			
17 AMETHYST WOODSTAR <i>Calliphlox amethystina</i>		4	
18 KINGFISHERS: ALCEDINIDAE			
19 RINGED KINGFISHER <i>Ceryle torquata</i>		20	x
20 AMAZON KINGFISHER <i>Chloroceryle amazona</i>	*	20	x
21 GREEN KINGFISHER <i>Chloroceryle americana</i>		19	x
22 GREEN-AND-RUFOUS KINGFISHER <i>Chloroceryle inda</i>		15	
23 AMERICAN PYGMY KINGFISHER <i>Chloroceryle aenea</i>		18	x
24 MOTMOTS: MOMOTIDAE			
25 BLUE-CROWNED MOTMOT <i>Momotus momota</i>			
26 JACAMARS: GALBULIDAE			
27 PALE-HEADED JACAMAR <i>Brachygalba goeringi</i>		4	x
28 RUFOUS-TAILED JACAMAR <i>Galbula ruficauda</i>	*	20	x
29 PUFFBIRDS: BUCCONIDAE			
30 RUSSET-THROATED PUFFBIRD <i>Hypnelus ruficollis</i>		19	x
31 SWALLOW-WING <i>Chelidoptera tenebrosa</i>		6	
32 WOODPECKERS & ALLIES: PICIDAE			
33 SCALED PICULET <i>Picumnus squamulatus</i>		19	x
34 RED-CROWNED WOODPECKER <i>Melanerpes rubricapillus</i>	*	20	x
35 LITTLE WOODPECKER <i>Veniliornis passerinus</i>			
36 RED-RUMPED WOODPECKER <i>Veniliornis kirkii</i>		14	x
37 GOLDEN-GREEN WOODPECKER <i>Piculus chrysochloros</i>		10	
38 SPOT-BREASTED WOODPECKER <i>Colaptes punctigula</i>		14	x
39 LINEATED WOODPECKER <i>Dryocopus lineatus</i>		20	x
40 CRIMSON-CRESTED WDPECKR <i>Campephilus melanoleucos</i>		19	x
41 OVENBIRDS & ALLIES: FURNARIIDAE			
42 PALE-BREASTED SPINETAIL <i>Synallaxis albescens</i>		14,2	x
43 RUSTY-BACKED SPINETAIL <i>Cranioleuca vulpina</i>		20	x
44 YELLOW-CHINNED SPINETAIL <i>Certhiaxis cinnamomea</i>		20	x
45 COMMON THORNBIRD <i>Phacellodomus rufifrons</i>	*	20	x
46 PLAIN XENOPS <i>Xenops minutus</i>		5	x
47 WOODCREEPERS: DENDROCOLAPTIDAE			
48 PLAIN-BROWN WOODCREEPER <i>Dendrocincla fuliginosa</i>		14	x
49			
50			

HATO PIÑERO NEW YEAR Dec. 1986 - Jan. 2007

6

		I	II	III
1	OLIVACEOUS WOODCREEPER <i>Sittasomus griseicapillus</i>		1,1	
2	STRONG-BILLED WDCRPR. <i>Xiphocolaptes promeropirhynchus</i>		5	
3	STRIPED WOODCREEPER <i>Xiphorhynchus obsoletus</i>			
4	BUFF-THROATED WOODCREEPER <i>Xiphorhynchus guttatus</i>		16	x
5	STRAIGHT-BILLED WOODCREEPER <i>Dendroplex picus</i> -- new	*	20	x
6	STREAK-HEADED WOODCREEPER <i>Lepidocolaptes souleyetii</i>		17	x
7	RED-BILLED SCYTHEBILL <i>Campylorhamphus trochilirostris</i>		19	x
8	TYPICAL ANTBERDS: THAMNOPHILIDAE			
9	GREAT ANTSHRIKE <i>Taraba major</i>		1,1	
10	BLACK-CRESTED ANTSHRIKE <i>Sakesphorus canadensis</i>	*	20	x
11	BARRED ANTSHRIKE <i>Thamnophilus doliatus</i>		20	x
12	WHITE-FLANKED ANTWREN <i>Myrmotherula axillaris</i>			
13	WHITE-FRINGED ANTWREN <i>Formicivora grisea</i>		19	x
14	WHITE-BELLIED ANTIBIRD <i>Myrmeciza longipes</i>		19,1	x
15	MANAKINS: PIPRIDAE			
16	LANCE-TAILED MANAKIN <i>Chiroxiphia lanceolata</i>		19,1	x
17	WIRE-TAILED MANAKIN <i>Pipra filicauda</i> [new genus]		2	x
18	TYRANT FLYCATCHERS: TYRANNIDAE			
19	S. BEARDLESS-TYRANNULET <i>Camptostoma obsoletum</i>		20	x
20	MOUSE-COLORED TYRANNULET <i>Phaeomyias murina</i>		20	x
21	YELLOW TYRANNULET <i>Capsiempis flaveola</i>		1	
22	FOREST ELAENIA <i>Myiopagis gaimardii</i>		20	x
23	GREENISH ELAENIA <i>Myiopagis viridicata</i>		10	
24	YELLOW-BELLIED ELAENIA <i>Elaenia flavogaster</i>		20	x
25	SMALL-BILLED ELAENIA <i>Elaenia parvirostris</i>			
26	PLAIN-CRESTED ELAENIA <i>Elaenia cristata</i>		13	
27	LESSER ELAENIA <i>Elaenia chiriquensis</i>		11	
28	SEPIA-CAPPED FLYCATCHER <i>Leptopogon amaurocephalus</i>		7,1	
29	NORTHERN SCRUB-FLYCATCHER <i>Sublegatus arenarum</i>		11	x
30	PALE-TIPPED TYRANNULET <i>Inezia caudata</i> [new sp.ep.]		20	x
31	TAWNY-CROWNED PYGMY-TYRANT <i>Euscarthmus meloryphus</i>		h	
32	PALE-EYED PYGMY-TYRANT <i>Atalotriccus pilaris</i> [new g.]		20	x
33	PEARLY-VENTED TODY-TYRANT <i>Hemitricus margaritaceiven.</i>		1	x
34	SLATE-HEADED TODY-TYRANT <i>Poecilotriccus sylvia</i> [new]		20	x
35	COMMON TODY-FLYCATCHER <i>Todirostrum cinereum</i>	*	20	x
36	YELLOW-OLIVE FLATBILL <i>Tolmomyias sulphurescens</i> [n.n.]		20	x
37	OCHRE-LORED FLATBILL <i>Tolmomyias flaviventris</i> [new name]	*	20	x
38	WHITE-THROATED SPADEBILL <i>Platyrinchus mystaceus</i>		12,1	
39	BRAN-COLORED FLYCATCHER <i>Myiophobus fasciatus</i>		1	x
40	TROPICAL PEWEE <i>Contopus cinereus</i>		14	x
41	ALDER/WILLOW FLYCATCHER <i>Empidonax alnorum/</i>		1	
42	VERMILION FLYCATCHER <i>Pyrocephalus rubinus</i>	*	20	x
43	PIED WATER-TYRANT <i>Fluvicola pica</i>		20	x
44	WHITE-HEADED MARSH-TYRANT <i>Arundinicola leucocephala</i>		20	x
45	CATTLE TYRANT <i>Machetornis rixosus</i>		20	x
46	DUSKY-CAPPED FLYCATCHER <i>Myiarchus tuberculifer</i>		20	x
47	VENEZUELAN FLYCATCHER <i>Myiarchus venezuelensis</i>		?	
48	SHORT-CRESTED FLYCATCHER <i>Myiarchus ferox</i>		14	x
49				
50				

HATO PIÑERO NEW YEAR Dec. 1986 - Jan. 2007

7

		I	II	III
1	GREAT CRESTED FLYCATCHER <i>Myiarchus crinitus</i>		6,2	x
2	BROWN-CRESTED FLYCATCHER <i>Myiarchus tyrannulus</i>	*	20	x
3	LESSER KISKADEE <i>Philohydor lictor</i>		20	x
4	GREAT KISKADEE <i>Pitangus sulphuratus</i>	*	20	x
5	BOAT-BILLED FLYCATCHER <i>Megarhynchus pitangua</i>		20	x
6	RUSTY-MARGINED FLYCATCHER <i>Myiozetetes cayanensis</i>		20	x
7	SOCIAL FLYCATCHER <i>Myiozetetes similis</i>		20	x
8	STREAKED FLYCATCHER <i>Myiodynastes maculatus</i>		19	x
9	PIRATIC FLYCATCHER <i>Legatus leucophaeus</i>		2	
10	WHITE-BEARDED FLYCATCHER <i>Phelpsia inornatus</i> (E) [n.g.]		19	x
11	VARIEGATED FLYCATCHER <i>Empidonomus varius</i>		9	
12	TROPICAL KINGBIRD <i>Tyrannus melancholicus</i>	*	20	x
13	GRAY KINGBIRD <i>Tyrannus dominicensis</i>		20	x
14	FORK-TAILED FLYCATCHER <i>Tyrannus savana</i>		20	x
15	WHITE-WINGED BECARD <i>Pachyramphus polychopterus</i>		15	x
16	CINEREOUS BECARD <i>Pachyramphus rufus</i>		1	
17	BLACK-CROWNED TITYRA <i>Tityra inquisitor</i>		18	
18	MARTINS & SWALLOWS: HIRUNDINIDAE			
19	GRAY-BREASTED MARTIN <i>Progne chalybea</i>		20	x
20	WHITE-WINGED SWALLOW <i>Tachycineta albiventer</i>	*	20	x
21	S. ROUGH-WINGED SWALLOW <i>Stelgidopteryx ruficollis</i>		9	
22	BANK SWALLOW <i>Riparia riparia</i>		2	x
23	BARN SWALLOW <i>Hirundo rustica</i>		19	x
24	WAGTAILS & PIPITS: MOTACILLIDAE			
25	YELLOWISH PIPIT <i>Anthus lutescens</i>			
26	WRENS: TROGLODYTIDAE			
27	BLACK-CAPPED DONACOBIUS <i>Donacobius atricapillus</i>		19	x
28	BICOLORED WREN <i>Campylorhynchus griseus</i>		19	x
29	STRIPE-BACKED WREN <i>Campylorhynchus nuchalis</i>	*	20	x
30	BUFF-BREASTED WREN <i>Thryothorus leucotis</i>		20	x
31	HOUSE WREN <i>Troglodytes aedon</i>		20	x
32	MOCKINGBIRDS & THRASHERS: MIMIDAE			
33	TROPICAL MOCKINGBIRD <i>Mimus gilvus</i>	*	20	x
34	THRUSHES & SOLITAIRES: MUSCICAPIDAE			
35	PALE-BREASTED THRUSH <i>Turdus leucomelas</i>		5	x
36	COCOA THRUSH <i>Turdus fumigatus</i>		6	
37	BARE-EYED THRUSH <i>Turdus nudigenis</i>		11,3	h
38	GNATWRENS & GNATCATCHERS: POLIOPTILIDAE			
39	LONG-BILLED GNATWREN <i>Ramphocaenus melanurus</i>		10,7	x
40	TROPICAL GNATCATCHER <i>Polioptila plumbea</i>	*	20	x
41	VIREOS & ALLIES: VIREONIDAE			
42	YELLOW-GREEN VIREO <i>Vireo flavoviridis</i>		16	
43	RED-EYED VIREO <i>Vireo olivaceus chivi</i>		10	x
44	SCRUB GREENLET <i>Hylophilus flavipes</i>	*	19	x
45	GOLDEN-FRONTED GREENLET <i>Hylophilus aurantiifrons</i>	*	20	x
46	RUFIOUS-BROWED PEPPERSHRIKE <i>Cyclarhis gujanensis</i>		16,2	
47	SISKINS, CROSSBILLS & ALLIES: FRINGILLIDAE			
48	LESSER GOLDFINCH <i>Carduelis psaltria</i>		4	
49				
50				

HATO PIÑERO NEW YEAR Dec. 1986 - Jan. 2007

8

	I	II	III
1 NEW WORLD WARBLERS: PARULIDAE			
2 TENNESSEE WARBLER <i>Vermivora peregrina</i>		1	
3 TROPICAL PARULA <i>Parula pityayumi</i>		2	
4 YELLOW WARBLER <i>Dendroica petechia</i>		20	x
5 BLACK-AND-WHITE WARBLER <i>Mniotilta varia</i>		1	
6 AMERICAN REDSTART <i>Setophaga ruticilla</i>		12	
7 PROTHONOTARY WARBLER <i>Protonotaria citrea</i>		1	
8 NORTHERN WATERTHRUSH <i>Seiurus noveboracensis</i>		18,2	x
9 MASKED YELLOWTHROAT <i>Geothlypis aequinoctialis</i>		3	
10 BANANAQUIT: COEREBIDAE			
11 BANANAQUIT <i>Coereba flaveola</i>	*	19	x
12 TANAGERS & ALLIES: THRAUPIDAE			
13 CHESTNUT-VENTED CONEBILL <i>Conirostrum speciosum</i>		18	x
14 GUIRA TANAGER <i>Hemithruapis guira</i>		6	
15 HOODED TANAGER <i>Nemosia pileata</i>		19	x
16 GRAY-HEADED TANAGER <i>Eucometis penicillata</i>		2	
17 SUMMER TANAGER <i>Piranga rubra</i>			
18 SILVER-BEAKED TANAGER <i>Ramphocelus carbo</i>		14	x
19 BLUE-GRAY TANAGER <i>Thraupis episcopus</i>	*	20	x
20 GLAUCOUS TANAGER <i>Thraupis glaucocolpa</i>		14	x
21 PALM TANAGER <i>Thraupis palmarum</i>		17	
22 TRINIDAD EUPHONIA <i>Euphonia trinitatis</i>		20	x
23 THICK-BILLED EUPHONIA <i>Euphonia lanirostris</i>		2	
24 BURNISHED-BUFF TANAGER <i>Tangara cayana</i>	*	20	x
25 BUNTINGS, SPARROWS & SEEDEATERS: EMBERIZIDAE			
26 PILEATED-FINCH <i>Coryphospingus pileatus</i>		18	x
27 BLUE-BLACK GRASSQUIT <i>Volatinia jacarina</i>		19	x
28 PLUMBEOUS SEEDEATER <i>Sporophila plumbea</i>		1	
29 GRAY SEEDEATER <i>Sporophila intermedia</i>	*	20	x
30 LESSON'S SEEDEATER <i>Sporophila bouvronides</i>		2	
31 LINED SEEDEATER <i>Sporophila lineola</i>		2	
32 YELLOW-BELLIED SEEDEATER <i>Sporophila nigricollis</i>		17	x
33 RUDDY-BREASTED SEEDEATER <i>Sporophila minuta</i>		20	x
34 LARGE-BILLED SEED-FINCH <i>Oryzoborus crassirostris</i>		9	
35 CHESTNUT-BELLIED SEED-FINCH <i>Oryzoborus angolensis</i>		9	
36 DULL-COLORED GRASSQUIT <i>Tiaris obscura</i>		1	
37 SAFFRON FINCH <i>Sicalis flaveola</i>	*	20	x
38 ORANGE-FRONTED YELLOW-FINCH <i>Sicalis columbiana</i>		1	
39 GRASSLAND YELLOW-FINCH <i>Sicalis luteola</i>		1	
40 WEDGE-TAILED GRASS-FINCH <i>Emberizoides herbicola</i>		4	
41 BLACK-STRIPED SPARROW <i>Arremonops conirostris</i>		5	
42 GRASSLAND SPARROW <i>Ammodramus humeralis</i>		13,1	x
43 YELLOW-BROWED SPARROW <i>Ammodramus aurifrons</i>		20	x
44 SALTATORS, CARDINALS & ALLIES: CARDINALIDAE			
45 GRAYISH SALTATOR <i>Saltator coerulescens</i>	*	20	x
46 ORINOCAN SALTATOR <i>Saltator orenocensis</i>		18	x
47 RED-CAPPED CARDINAL <i>Paroaria gularis</i>	*	20	x
48 DICKCISSEL <i>Spiza americana</i>		6	
49			
50			

HATO PIÑERO NEW YEAR Dec. 1986 - Jan. 2007

		I	II	III
1	TROUPIALS & ALLIES: ICTERIDAE			
2	YELLOW-HOODED BLACKBIRD <i>Chrysomus icterocephalus</i> [n g]		19	x
3	CARIB GRACKLE <i>Quiscalus lugubris</i>	*	20	x
4	RED-BREASTED BLACKBIRD <i>Sturnella militaris</i>	*	20	x
5	EASTERN MEADOWLARK <i>Sturnella magna</i>	*	19	
6	SHINY COWBIRD <i>Molothrus bonariensis</i>		17	x
7	GIANT COWBIRD <i>Molothrus oryzivora</i> [new species]		9	
8	YELLOW-BACKED ORIOLE <i>Icterus chrysater</i>		2	
9	YELLOW ORIOLE <i>Icterus nigrogularis</i>		19	x
10	ORANGE-CROWNED ORIOLE <i>Icterus auricapillus</i>		10	
11	VENEZUELAN TROUPIAL <i>Icterus icterus</i> [split]	*	20	x
12	BALTIMORE ORIOLE <i>Icterus galbula</i>			
13	YELLOW-RUMPED CACIQUE <i>Cacicus cela</i>	*	20	x
14	CRESTED OROPENDOLA <i>Psarocolius decumanus</i>		19	x
15	ORIOLE BLACKBIRD <i>Gymnomystax mexicanus</i>		9	x
16				
17				
18				
19				
20				
21				
22				
23				
24				
25				
26				
27				
28				
29				
30				
31				
32				
33				
34				
35				
36				
37				
38				
39				
40				
41				
42				
43				
44				
45				
46				
47				
48				
49				
50				

MAMMALS		II	III
1	Follows Neotropical Rainforest Mammals, A Field Guide.		
2	1997, 2nd ed. Text by L.H. Emmons & Illustrations by F. Feer		
3			
4	COMMON OPOSSUM <i>Didelphis marsupialis</i>	5	
5	ROBINSON'S MOUSE OPPOSUM <i>Marmosa robinsoni</i>	2	
6	GIANT ANTEATER <i>Myrmecophaga tridactyla</i>	6	
7	SOUTHERN TAMANDUA <i>Tamandua tetradactyla</i>	7	
8	9-BANDED LONG-NOSED ARMADILLO <i>Dasypus novemcinctus</i>	3	
9	GREATER BULLDOG or FISHING BAT <i>Noctilio leporinus</i>	19	x
10	LESSER BULLDOG or FISHING BAT <i>N. albiventris</i>	20	x
11	LONG-NOSED BAT <i>Rhynconycteris naso</i>	11	
12	WHITE-LINED SAC-WINGED BAT	3	
13	GHOST BAT <i>Diclidurus</i> sp.	1	
14	FREE-TAILED or MASTIFF BAT species	3	
15	Miscellaneous unidentified BAT species	20	x
16	WEDGE-CAPPED CAPUCHIN MONKEY <i>Cebus olivaceus</i>	20	x
17	RED HOWLER MONKEY <i>Alouatta seniculus</i>	20	x
18	CRAB-EATING ZORRO <i>Cerdocyon thous</i>	20	x
19	CRAB-EATING RACCOON <i>Procyon cancrivorus</i>	10	
20	TAYRA <i>Eira barbara</i>	5	
21	STRIPED HOG-NOSED SKUNK <i>Conepatus semistriatus</i>	6	
22	OCELOT <i>Felis pardalis</i>	16	x
23	JAGUARUNDI <i>Felis yagouaroundi</i>	4	
24	PUMA <i>Felis concolor</i>	4	
25	JAGUAR <i>Panthera onca</i>	1,1	
26	BOTO or PINK RIVER DOLPHIN <i>Inia geoffrensis</i>	1	
27	BRAZILIAN TAPIR <i>Tapirus terrestris</i>	4	
28	COLLARED PECCARY <i>Tayassu tajacu</i>	6	
29	RED BROCKET DEER <i>Mazama americana</i>	3	
30	WHITE-TAILED DEER <i>Odocoileus virginianus</i>	20	x
31	RED-TAILED SQUIRREL <i>Sciurus granatensis</i>	20	x
32	BRAZILIAN PORCUPINE <i>Coendu prehensilis</i>	3	
33	CAPYBARA <i>Hydrochaeris hydrochaeris</i>	20	x
34	PACA <i>Agouti paca</i>	3	x
35	COTTONTAIL <i>Sylvilagus floridanus</i>	19	
36			
37			
38			
39	AMPHIBIANS		
40	MARINE TOAD <i>Bufo marinus</i>	10	x
41	GLASS FROG <i>Hyalinobatrachium</i> spp.	4	x
42	TREE FROG species	4	
43			
44	FISHES		
45	PAVÓN <i>Cichla ocellaris</i>	16	x
46	PIRANHA <i>Serrasalmus</i> spp.	20	x
47	ARMORED CATFISH <i>Callichthys callichthys</i>	2	x
48	SABRE-TOOTH PARAYA <i>Hydrolicus scomberoides</i>	1	x
49	EEL	1	
50			

REPTILES		II	III
1	ORINOCO CROCODILE <i>Crocodylus intermedius</i>	2	
2	SPECTACLED CAIMAN <i>Caiman crocodilus</i>	20	x
3	TEGU LIZARD <i>Tupinambis tequixin</i>	14	x
4	AMEIVA <i>Ameiva ameiva</i>	20	x
5	IGUANA <i>Iguana iguana</i>	20	x
6	GECKO <i>Phyllodactylus ventralis</i>	14	x
7	RED-FOOTED TORTOISE <i>Geochelone carbonaria</i>	7	
8	LLANOS SIDENECK <i>Podocnemis vogli</i>	20	x
9	YELLOW-HEADED SIDENECK <i>Podocnemis unifilis</i>		
10	MATAMATA TURTLE <i>Chelus fimbriatus</i>	14	
11	FER-DE-LANCE (MAPANARE DE AGUA) <i>Bothropsspp.</i>	9	
12	VERDEGALLO SNAKE	3	
13	ARBOREAL SNAKE species	11	
14	TIGRA CAZADORA	3	
15	CULEBRA AMARILLA	1	
16	ANACONDA	2	
17	UNIDENTIFIED SNAKES	12	
18			
19			
20	ARTHROPODS		
21	GOLDEN ORB-WEAVER <i>Nephila clavipes</i>	13	x
22	TARANTULA <i>Lycosa tarentula</i>	5	
23	LEAF-CUTTING ANTS <i>Atta cephalotes</i>	20	x
24	ARMY ANTS <i>Eciton burchelli</i>	9	x
25	BULLET or 24-HOUR BITING ANTS <i>Paraponera clavata</i>	5	
26	CECROPIA or AZTECA ANTS <i>Azteca spp.</i>	8	x
27	ARBOREAL TERMITES <i>Nasutitermes spp.</i>	20	x
28	SUNDOWN CICADAS or CHICHARRAS <i>Fidicina mannifera</i>	17	x
29	CHIGGERS or COLORADILLAS <i>Eutrombicula spp.</i> [larval stage]	18	x
30	RED CRAB	13	
31	ANT LION <i>Mermeleonspp.</i> [larval stage]	20	x
32	CALIGO or CREAM OWL BUTTERFLY <i>Caligo memmon</i>	20	x
33	MORPHO <i>Morpho peleides</i>	20	x
34	<i>Heliconius</i> BUTTERFLY species	20	x
35	MALACHITE BUTTERFLY <i>Siproeta stelenes</i>	5	
36	MOSQUITO species	20	x
37	COCKROACH species	13	x
38	STICK INSECT species	8	x
39	SCORPION species	5	
40	PRAYING MANTID species	18	
41	KATYDID species	18	x
42	PAPER WASP species	20	x
43	HONEYBEES <i>Apis spp.</i>	13	
44	DRAGONFLY species	20	x
45	DAMSELFLY species	20	x
46	TICK species	13	x
47	BUMBLEBEE species	20	x
48	SPIDER species	20	x
49	MOTH species	20	x
50			